

our services

- ◆ major projects
 - ◆ BSF
 - ◆ health projects
 - ◆ leisure projects
 - ◆ LIFT
- ◆ shared services and outsourcing
- ◆ social housing projects
- ◆ street lighting and highways
- ◆ waste and renewables

waste and renewables

The sustainability agenda has transformed the waste sector into a dynamic area in the space of just a few short years. Local authorities are now under more pressure than ever before to reduce, reuse and recycle municipal waste and wherever possible convert it into heat and electricity.

Local authorities who fail to meet the increasingly stringent targets for landfill reduction and waste recycling face substantial fines and other sanctions imposed by the European Union and others. This drive for waste efficiency has in turn created a brand new market for capital investment and for new and innovative technology and service.

This has a significant impact on local authorities whether they are responsible for the collection and recycling of waste (Waste Collection Authorities) or for the disposal and treatment of waste (Waste Disposal Authorities). It also impacts on both the general public and the entire waste collection industry. The Government also plays a key role in driving policy and providing funds by way of PFI subsidy to funders who bankroll waste infrastructure.

Bevan Brittan has a large, specialist Waste team that advises local authorities and the waste Industry on all aspects of waste collection and disposal.

For waste collection authorities we advise on all issues relating to recycling, collection contracts and street cleansing programmes. This includes advice on both new contracts and arrangements and reviewing the efficiency and standards of existing contracts where authorities have concerns over service delivery and value for money.

For waste disposal authorities we are market leaders in advising on the high value and politically sensitive issues relating to the delivery of major infrastructure treatment and disposal projects. Work here includes advising on complex procurement (including the use of competitive dialogue), funding and planning issues required by waste disposal authorities. We have also led the way in advising on collaboration between waste disposal authorities with the delivery of the first of these projects in the UK and providing the published standard guidance to collaborating authorities produced by DEFRA. This work for Central Government also includes advising the DEFRA sponsored Waste Infrastructure Delivery Programme (WIDP), established to support local authorities to accelerate investment in the large-scale infrastructure required to treat residual waste.

For the private sector our experience and in-depth understanding of the political drivers and structure of waste projects has enabled us to add value and insightful advice on these sensitive projects. Our work here includes advising contractors, EPC Contractors, O&M Providers, technology companies and funders.

some of our clients include:

- ◆ SWDWP
- ◆ BEaR Project Partnership
- ◆ Project Reduce
- ◆ Arc 21
- ◆ SWaMP
- ◆ North London Waste Authority
- ◆ Covanta Energy
- ◆ Viridor
- ◆ Cyclerval
- ◆ Veolia
- ◆ Hills Group

meet the team

team members

Nadeem Arshad
Major Projects
Partner

t: 0870 194 8932

e: [Nadeem Arshad](mailto:Nadeem.Arshad@bbtt.com)

Christopher Jarman
Major Projects
Partner

t: 0870 194 1621

e: [Christopher Jarman](mailto:Christopher.Jarman@bbtt.com)

Caroline Taylor
Property
Partner

t: 0870 194 1718

e: [Caroline Taylor](mailto:Caroline.Taylor@bbtt.com)

Andrew Tobin
Construction and Engineering
Partner

t: 0870 194 7838

e: [Andrew Tobin](mailto:Andrew.Tobin@bbtt.com)

Susie Smith
Commercial
Consultant

t: 0870 194 1604

e: [Susie Smith](mailto:Susie.Smith@bbtt.com)

Charlotte Scourfield
Construction and Engineering
Senior Associate

t: 0870 194 1664

e: [Charlotte Scourfield](mailto:Charlotte.Scourfield@bbtt.com)

Scott Townson
Major Projects
Senior Associate

t: 0870 194 8911

e: [Scott Townson](mailto:Scott.Townson@bbtt.com)

Jonathan Turner
Construction and Engineering
Senior Associate

t: 0870 194 8969

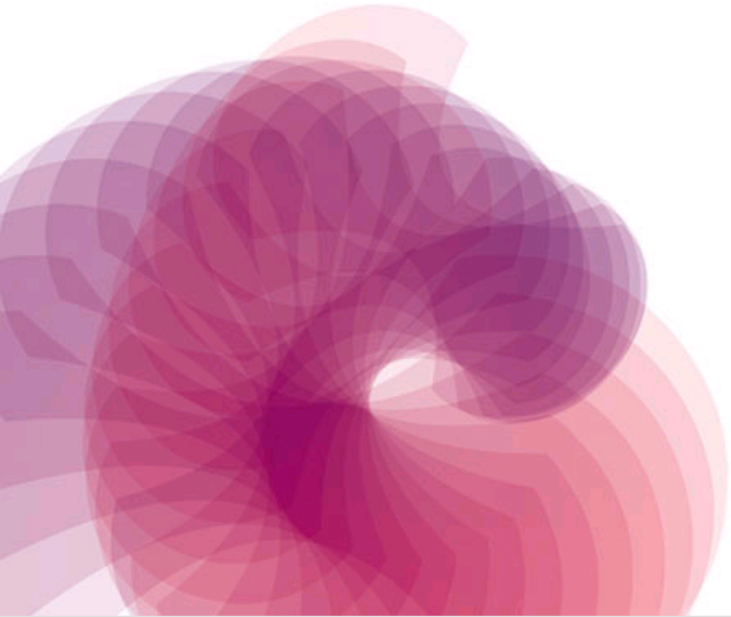
e: [Jonathan Turner](mailto:Jonathan.Turner@bbtt.com)

Kathryn Lawrance
Planning & Environmental
Associate

t: 0870 194 8940

e: [Kathryn Lawrance](mailto:Kathryn.Lawrance@bbtt.com)

Joanne Sinar
Construction & Engineering
Associate



t: 0870 194 7809

e: [Joanne Sinar](#)

Alastair Broster

Construction and Engineering
Solicitor

t: 0870 194 1287

e: [Alastair Broster](#)

Rose Chipperfield

Major Projects
Solicitor

t: 0870 194 1339

e: [Rose Chipperfield](#)

Matthew Mo

Commercial
Solicitor

t: 0870 194 7815

e: [Matthew Mo](#)

Elaine Oonan

Commercial
Solicitor

t: 0870 194 7907

e: [Elaine Oonan](#)